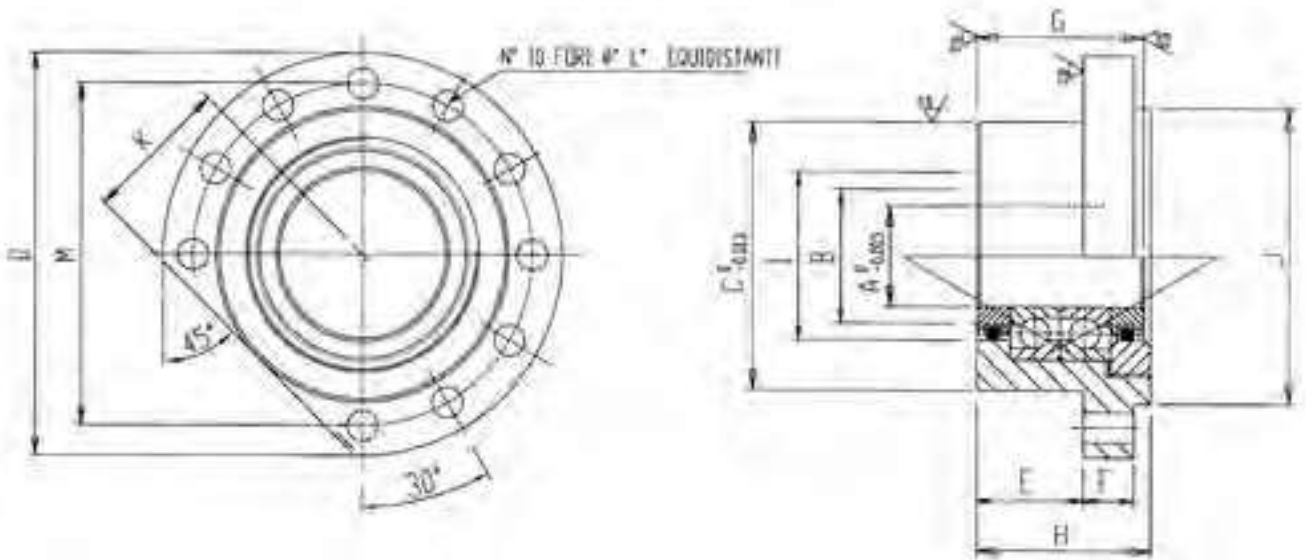


TABELLA DIMENSIONALE/ DIMENSIONS

MOD. DUPLEX



| A-Ø Shaft | Duplex | A | B | C | D | E | F | G | H | I | J | K | L | M | C | Co | Pr | Vg |
|-----------|---------|----|----|-----|-----|------|----|----------------|----|----|-----|----|------|-----|------|------|-----|------|
| 20 | SUP20DC | 20 | 26 | 60 | 90 | 32 | 13 | 44.26 43.24 | 47 | 36 | 64 | 32 | 6.6 | 76 | 1820 | 3380 | 230 | 3900 |
| 25 | SUP25DC | 25 | 34 | 80 | 120 | 32 | 15 | 50.26 49.24 | 52 | 36 | 88 | 44 | 9.2 | 102 | 2000 | 4240 | 280 | 3400 |
| 30 | SUP30DC | 30 | 41 | 80 | 120 | 32 | 15 | 50.26 49.24 | 52 | 50 | 88 | 44 | 9.2 | 102 | 2460 | 5400 | 360 | 2850 |
| 35 | SUP35DC | 35 | 46 | 90 | 130 | 32 | 15 | 50.26 49.24 | 52 | 60 | 98 | 49 | 9.2 | 113 | 3055 | 7100 | 475 | 2500 |
| 40 | SUP40DC | 40 | 55 | 124 | 165 | 43.5 | 17 | 64.26 63.24 | 66 | 66 | 128 | 64 | 11.4 | 146 | 3745 | 9100 | 600 | 2200 |

| | | |
|----|--|-----------------|
| C | Capacità di carico dinamico/ <i>Dinamic load capacity</i> | daN |
| Co | Capacità di carico assiale/ <i>Static load capacity</i> | daN |
| Pr | Precarico/ <i>Preload</i> | daN |
| Vg | Velocità massima con lubrificazione a grasso/ <i>Maximum speed with grease lubrication</i> | giri/min rpm |